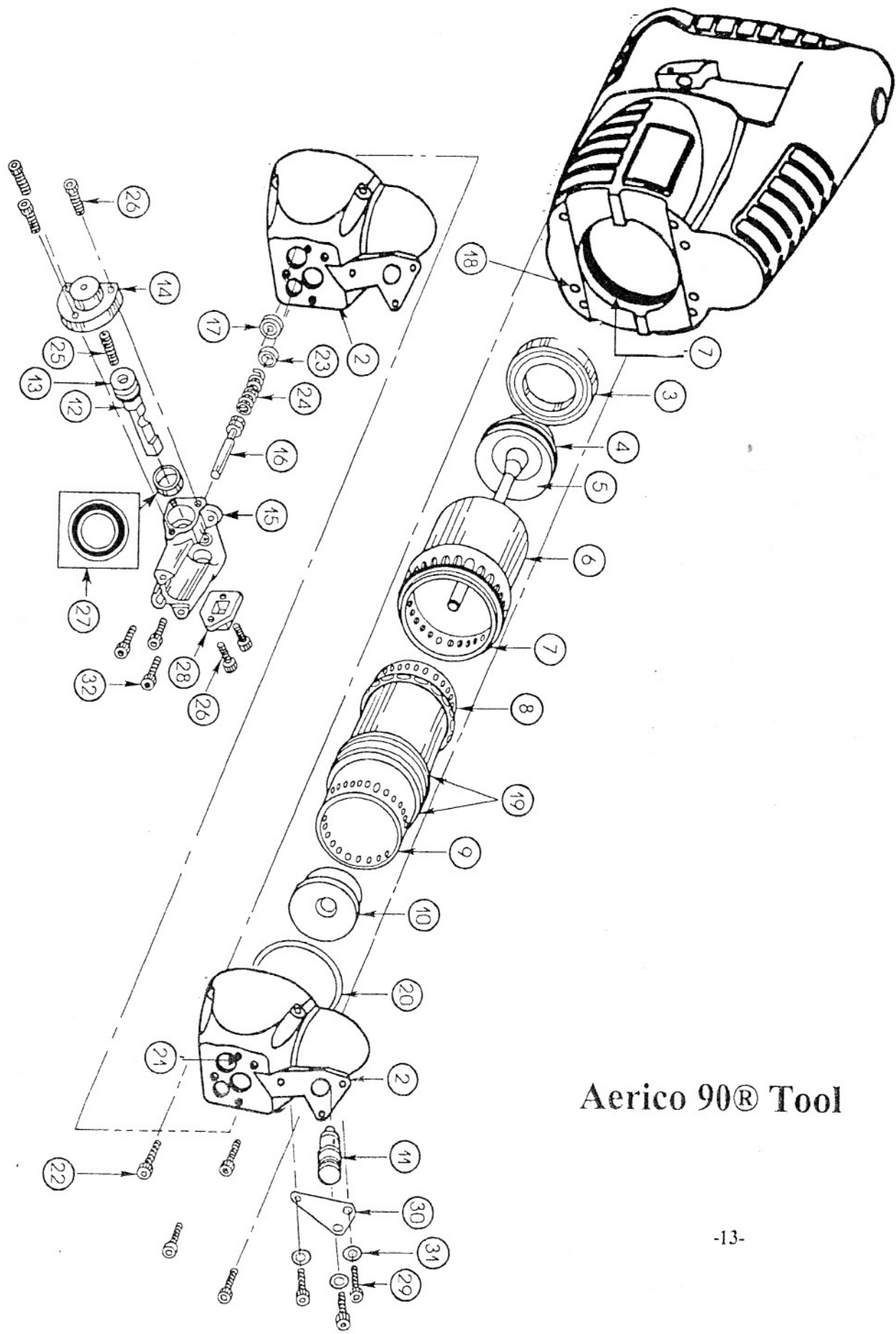


# TOOL SCHEMATIC & PARTS LIST



Aerico 90® Tool

# AERICO® 90 BASE TOOL

Item Number	Description	Part Number	Quantity
1	Handle Housing Assembly	ACP 190 0004A *	1
2	Lower Housing	ACP 100 0002A	1
3	Main Valve Seat	ACP 100 0007	1
4	Piston O-Ring	ACP 100 0048	1
5	Piston and Driver Rod	ACP 190 0005	1
6	Main Valve	ACP 190 0002	1
7	Main Valve O-Ring	ACP 100 0050	2
8	Main Valve Guide	ACP 190 0006	1
9	Piston Cylinder	ACP 190 0001	1
10	Bumper	ACP 100 0017	1
11	Pilot Valve Assembly	ACP 100 0028 *	1
12	Nail Slide	ACP 100 0009	1
13	Nail Slide O-Ring	ACP 100 0047	2
14	Nail Slide End-Plate	ACP 100 0038	1
15	Nose Support Assembly	ACP 190 0014K *	1
16	Touch Valve Assembly	ACP 100 0041 *	1
17	Piston Return Diaphragm Assembly	ACP 100 0027	1
18	Gasket Seal 3/16 x 5/6	ACP 100 0012	3
19	Exhaust Seal	ACP 100 0008	2
20	O-Ring	ACP 100 0049	1
21	Gasket Seal 1/8 x 1/4	ACP 100 0011	1
22	5/16 x 1-1/4 Socket Head Cap Screw	ACP 100 0057	4
23	Gasket Seal 1/2 x 11/16	ACP 100 0013	1
24	Touch Valve Spring	ACP 100 0035	1
25	Nail Slide Return Spring	ACP 100 0039	1
26	# 1 0-24 x 5/8 Socket Head Cap Screw	ACP 100 0055N	5
27	Nail Slide Seal	ACP 100 0053	1
28	Nail Slide Guide Cover	ACP 100 0042	1
29	1/4-20 x 5/8 Socket Head Cap Screw	ACP 190 0016N	3
30	Pilot Valve Cover	ACP 965 0001	1
31	1/4 Flat Washer	ACP 100 0054	3
32	1/4-20 x 3/4 Socket Head Cap Screw	ACP 100 0056N	3

\* Refer to pages 14 & 15 for assembly breakdown.